



RECOMMENDED MINIMUM SPECIFICATIONS AND SAFETY APPLICATIONS FOR AN ACCESSIBILITY RAMP



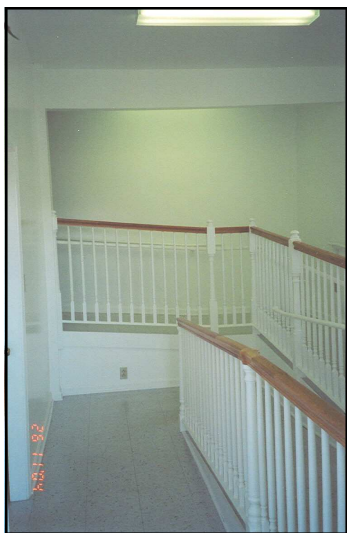
*These are general guidelines.
You must consult your local building codes for Americans with Disability Act (ADA), locality, and state requirements.*

- The ramp should have 8 degrees of rise. For every inch of height, there should be one foot of length. The weight of all participants and equipment should be considered before the ramp is constructed.
- The top of the ramp platform should be even with the top edge of the door sill. The threshold plate should have a 1/2" rise. Areas around the threshold plate should be caulked.
- When the floor of the stoop (platform) is lower than the door sill, then the floor should be raised. Otherwise all of the barriers will not be removed.
- Handrails should be 34" to 38" high. If the handrail is made of wood, then a check for splinters should be made. See page 2 for more information on handrails.
- The floor of the ramp should be 36" wide.
- Safety board should be no more than 2" from the floor of the ramp, and one other safety board should be half way between the hand rail and the top of the bottom safety board. These boards should run the full length of the ramp. Other protective designs could be used.
- Non-slip adhesive strips or other safety non-slip material should be applied to the bottom of the ramp.
- If the ramp is longer than 30', a 60"x60" rest/safety platform should be installed. This applies to every 30'.
- A concrete or other material platform should be constructed at the bottom end of the ramp. A solid surface material should run from the ramp platform to the parking area.
- The holding platform at the entrance door should be 60"x60". This will allow for the door to open with the wheelchair on the holding platform.

HANDRAILS

Handrails should:

- Be provided on both sides of any ramp with a rise greater than 6 inches or a horizontal run greater than 6 feet (72 inches).
- For children, be mounted between 18 and 20 inches above the surface of the ramp.
- Extend horizontally at least 12 inches (1 foot) beyond the top and bottom of the ramp or stair. The preferred extension is 18 to 24 inches.
- Be continuous and uninterrupted at all platforms and landings.
- Have a minimum finger space distance between the handrail and the wall behind it of 1 1/2 inches.
- Have finger space between handrail and wall free of any mounting blocks, obstructions, or sharp edges.
- Contrast visually with the wall or material behind them.
- Have a texture that changes to indicate approaching level changes, turns, and junctions.
- Have guards designed so that a 4-inch diameter sphere will not pass through openings in the space from the floor up to the bottom of the handrails.



For additional information, consult the *Accessibility Audit for Churches: Creating Access for Persons with Physically Challenging Conditions*. This workbook helps local churches discover barriers which make church buildings inaccessible to persons with disabilities. It includes a question and answer survey, methods for modification, a supplementary resource and architectural diagrams that are easy to read. Available from the Virginia Conference Commission on Disabilities at no charge to local churches or by contacting the Service Center, General Board of Global Ministries, The United Methodist Church, 7820 Reading Road, Cincinnati, OH 45222-1800, 1-513-761-2100, <http://gbgm-umc.org/e-store/> Price: \$5.95 (Publication #3810)